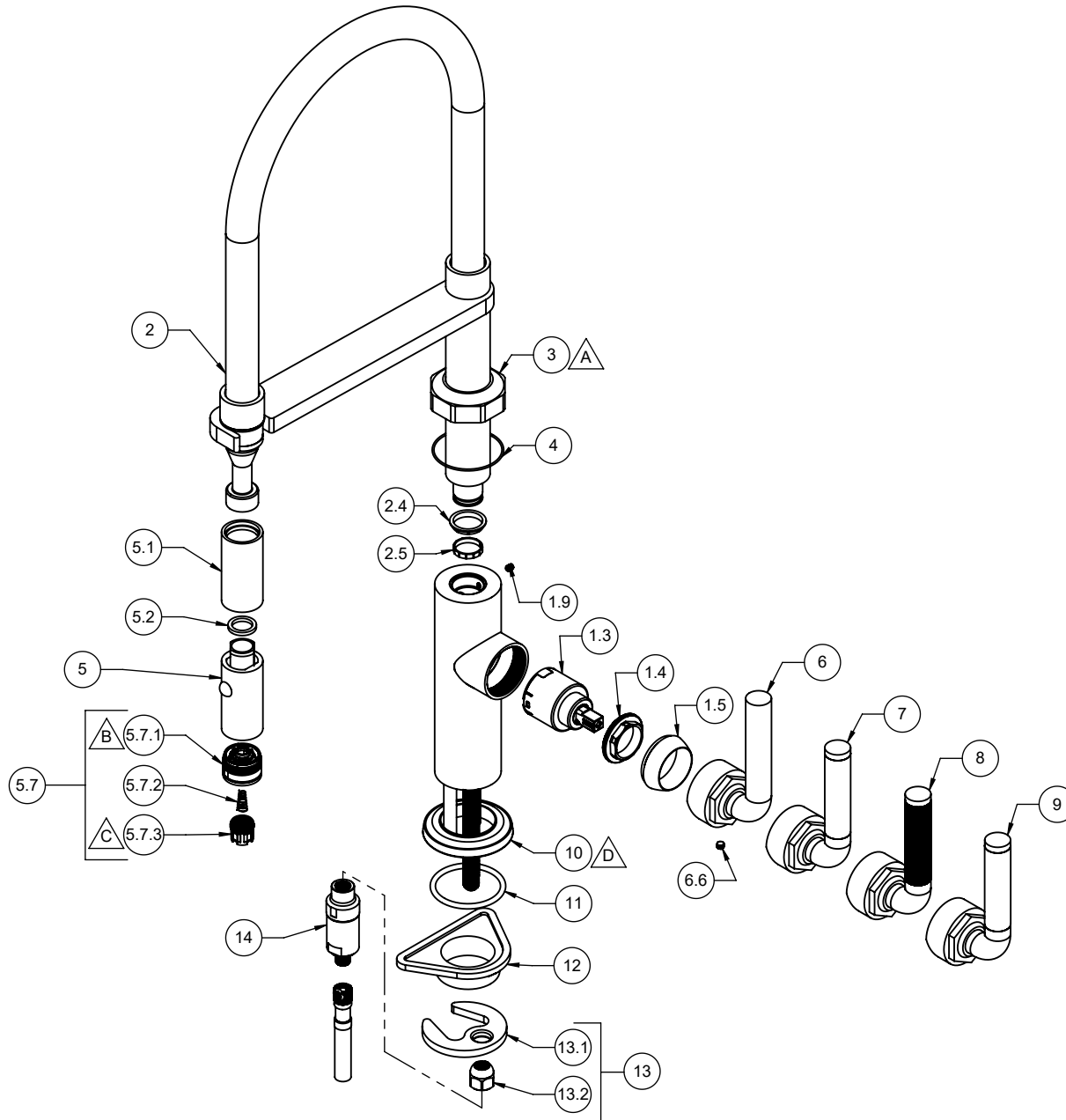


K30-150-SL
K30-150-KL
K30-150-FL
K30-150-TL

- △ REQUIRES ITEM 4
- △ REQUIRES ITEM 16
- △ REQUIRES ITEM 15
- △ REQUIRES ITEM 11



K30-150-SL
K30-150-KL
K30-150-FL
K30-150-TL

To order spare parts add and/or replace as stated below:

SPD- prefix added to part number(s)
-ZZ replaced with finish code (see finish table)
-WW replaced with **-90** (light finish) or **-96** (dark finish)

Ex: **SPD-7-100362-PC** or **SPD-86030-96**

ITEM	PART NO.	DESCRIPTION	QTY.	
10	10781-ZZ	BASE RING, INDUSTRIAL KIT	1	
11	87139-80	O-RING Ø44.04 X 3.53 (-224) BUNA-N A70	1	
12	880325-81	SPACER, SINGLE HOLE MOUNTING	1	
13	6-200246	KIT, KITCHEN/H2O DISP MNT HDW (incl. 13.1, 13.2)	1	
13.1	880309-98	MOUNTING BRACKET, SINGLE HOLE CRESCENT	1	
13.2	10552-98	NUT, HEX W/ DOME 7/16-24	1	
14	6-200262	KIT, KITCHEN FAUCET CHECKVALVE - 1.85 GPM FLOW	1	
15	880317-81	TOOL, AERATOR INSERT	1	
for ITEM 5.7.1	16	880333-91	KEY, ALLEN 7.0MM, BLACK	1
for ITEM 1.9	17	882042-99	KEY, ALLEN, 5/64", BLACK	1
for ITEM 6.6	18	882043-99	KEY, ALLEN, 3/32", BLACK	1

ITEM	PART NO.	DESCRIPTION	QTY.	
1.3	880297-99	CART 35MM, SNGL LVR (COLD TO HOT ROTATION)	1	
1.4	10564-98	NUT, 35MM CART KIT PACKING	1	
1.5	10565-ZZ	BONNET, STD KIT	1	
1.9	86031-WW	SETSCREW 8-32 X 3/16 SCKT HD CUP PT SS	1	
2	7-100345-ZZ	ASM, SPRING KIT ARM (incl. 2.4, 2.5)	1	
2.4	10558-81	BUSHING, KIT SPT ADPTR	3	
2.5	10557-81	FRICTION RING, KIT SPT ADPTR	1	
3	10783-ZZ	TRIM, OCTAGON KIT BODY	1	
4	87338-80	O-RING Ø46.00 X 1.20 (NA) BUNA-N A70	1	
5	7-100346-ZZ	SPRAY HEAD, Ø28MM PULL DN - W/MBLK UPPER (incl. 5.1, 5.2, 5.7)	1	
5.1	10618-ZZ	SLEEVE, KIT CONT SPRAYER	1	
5.2	87156-80	WSHR Ø14.20 X Ø19.20 X 2.50MM BUNA-N (NSF-61-12)	1	
5.7	6-200248	KIT, SPRAYER JET/AERATOR (incl. 5.7.1, 5.7.2, 5.7.3)	1	
5.7.1	11311-81	FACEPLATE, PULL DOWN SPRAY G2	1	
5.7.2	10535-90	SPRING, PULL DOWN SPRAY	1	
5.7.3	880553-81	INSERT, AERATOR W/ M16 X 1.0, FULL FLOW	1	
for SL Series	6	7-100279-ZZ	ASM, INDUSTRIAL KIT LEVER - SMOOTH (incl. 6.6)	1
	6.6	86047-90	SETSCREW 10-24 X 3/16 SCKT HD CONE PT SS	1
for FL Series	7	7-100301-ZZ	ASM, INDUSTRIAL KIT LEVER - CARBON FIBER (incl. 6.6)	1
for KL Series	8	7-100300-ZZ	ASM, INDUSTRIAL KIT LEVER - KNURL (incl. 6.6)	1
for TL Series	9	7-100568-ZZ	ASM, INDUSTRIAL KIT LEVER - TEAK (incl. 6.6)	1